



*SOLITAIRRIANN
CITY*



**309
MTRS
FROM F1 TRACK
JAYPEE SPORTS
CITY**



RERA NO (UPRERAPRJ6887)
RERA NO (UPRERAPRJ6766)



- *Club House*
- *Double High Entrance Lobby*
- *Earthquake Resistance Structure*
- *Skywalk*
- *Sky Lounge*
- *Swimming Pool*
- *Kids Play Area*
- *Sky Gym*

- *Landscape Greens*
- *Terrace Garden*
- *Independent Car Parking*
- *CCTV Surveillance*
- *3 Side Open project*
- *Iconic Tower*
- *Party Lawn*
- *Pent House*

- *Villas*
- *Independent Floors*
- *Cricket Practice Pitch*
- *Badminton Court*
- *Half Court Basket Ball*
- *Jacuzzi*
- *Jogging & Cycling Track*
- *power backup*



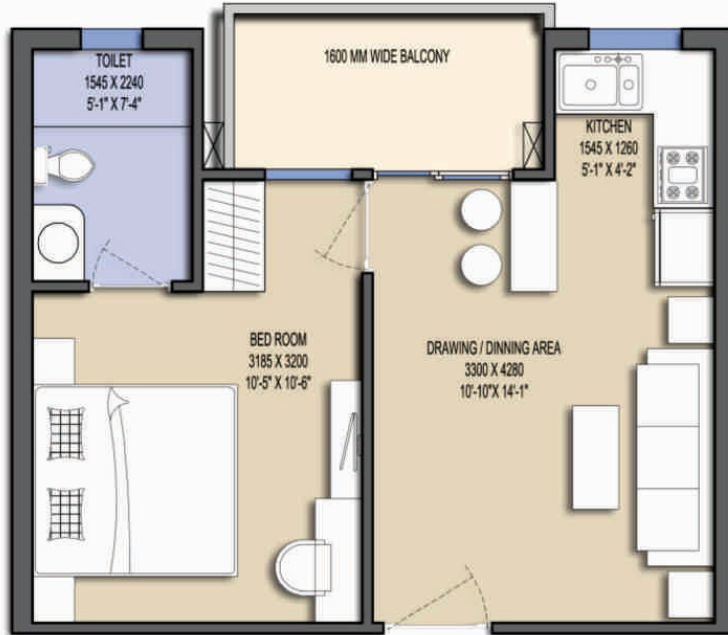
UNIT TYPE

- **1 BHK + 1 Toilet (665 Sq.Ft.)**
- **2 BHK + 2 Toilet + Balcony (1000 Sq.Ft.)**
- **2 BHK + 2 Toilet + Balcony (1012 Sq.Ft.)**
- **2 BHK + 2 Toilet + Balcony (1140 Sq.Ft.)**
- **3 BHK + 2 Toilet + Utility + Balcony (1425 Sq.Ft.)**
- **3 BHK + 3 Toilet + Terrace Garden + Utility Balcony (1850 Sq.Ft.)**
- **3 BHK + 3 Toilet + Terrace Garden + Utility Balcony (1935 Sq.Ft.)**
- **3 BHK + 3 Toilet + Plunged Pool + Terrace Garden Utility Balcony (2080 Sq.Ft.)**
- **3 BHK + Puja/Store Room + 4 toilet + Utility Room + Terrace + Pool (79 Sq.Ft.) (2400 Sq.Ft.)**
- **4 BHK + Puja/Store Room + TV Lounge + 5 Toilet + Utility Room + Pool Room + Terrace + Pool(4350 Sq.Ft.)**

Unit Sizes

665 SQFT

TOWER- T1



KEY PLAN

- 1 BHK
- 1 TOILET
- BALCONY

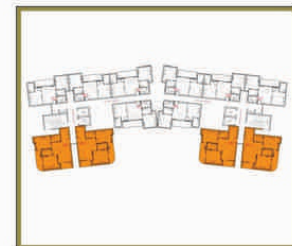
UNIT- A
AREA 665 SQFT
(GROUND TO 29th FLOOR)

Disclaimer: The Sizes, Layout and Plans are suggestive and may vary with actual.



1012 SQFT

TOWER- T2, T3



KEY PLAN

- 2 BHK
- 2 TOILET
- BALCONY

UNIT- C
AREA 1012 SQFT
(GROUND TO 22th FLOOR)

Disclaimer: The Sizes, Layout and Plans are suggestive and may vary with actual.



Unit Sizes

1115 SQFT

TOWER- S5



UNIT- E
 AREA 1015 SQFT
 (1st TO 27th FLOOR)



KEY PLAN

- 2 BHK
- 2 TOILET
- DRAWIGN DINNING ROOM
- BALCONY

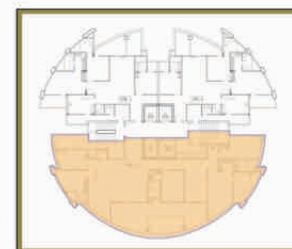
Disclaimer: The Sizes, Layout and Plans are suggestive and may vary with actual.

4350 SQFT

TOWER- S1



UNIT- R
 AREA 4350 SQFT
 (1st TO 27th FLOOR)



KEY PLAN

- 4 BHK
- PUJA / STORE ROOM
- TV LOUNGE
- UTILITY ROOM + TOILET
- PLUNGED POOL (145 SQFT)
- BALCONY

Disclaimer: The Sizes, Layout and Plans are suggestive and may vary with actual.

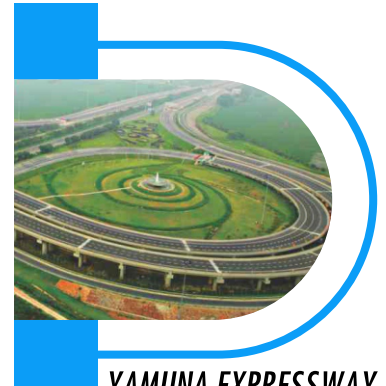
Location Advantage



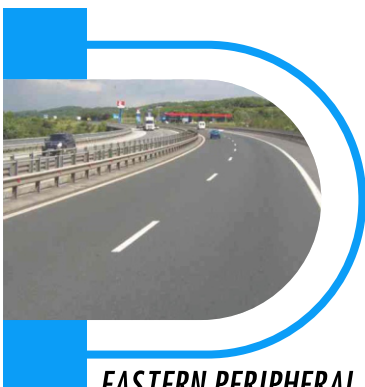
**INDIAN LEADING
INSTITUTE AT WALKING
DISTANCE**



F1 TRACK



YAMUNA EXPRESSWAY



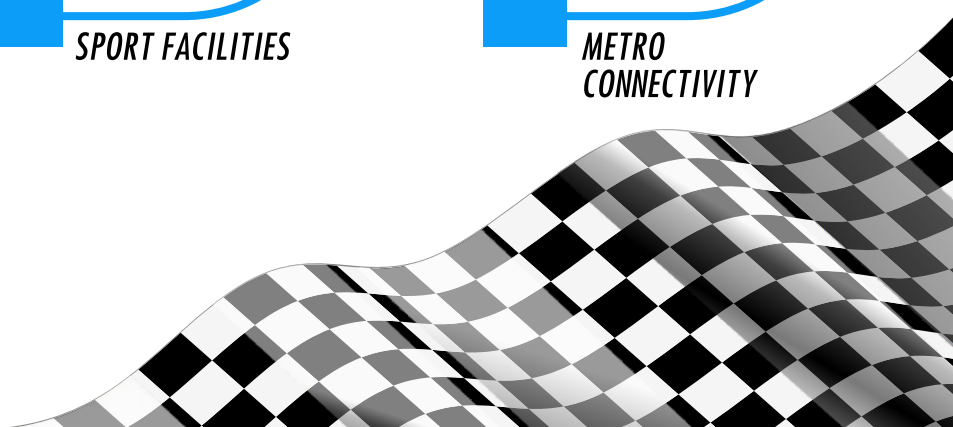
**EASTERN PERIPHERAL
EXPRESSWAY**



SPORT FACILITIES



**METRO
CONNECTIVITY**



Media Coverage

www.livehindustan.com

हिन्दुस्तान
मनोसा नए हिन्दुस्तान का

विदेकनायक आनंद ने नौवें सतर्क टर्मिनल में चीन के खिलाड़ी को हराया

टर्मिनल, रनवे, एयरसाइड इंफ्रास्ट्रक्चर, सड़क और सहायक इमारतों का निर्माण करेगी

जेवर एयरपोर्ट का निर्माण टाटा करेगी, 2024 में उड़ान शुरू होगी

जेवर एयरपोर्ट

ग्रेटर नोएडा, बंगलुरु संवाददाता। जेवर एयरपोर्ट का निर्माण टाटा प्रोजेक्ट्स कंपनी करेगी। यह कंपनी टर्मिनल, रनवे, एयरसाइड इंफ्रास्ट्रक्चर, सड़क, लैंडसाइड सुविधाएं और इससे सहायक इमारतों का निर्माण करेगी। साथ ही, यह कंपनी परियोजना के लिए इंजीनियरिंग और निर्माण सामग्री को

5730 करोड़ रुपये खर्च होने पर

40 साल का करार हुआ है विकास करने वाली कंपनी के साथ

10 इमिग्रेशन काउंटर बनाए जाएंगे यात्रियों का समय बचाने के लिए

जेवर एयरपोर्ट की डिजाइन टिकाऊ विकास पर आधारित है। एयरपोर्ट का निर्माण हरित आधारभूत ढांचे को अपनाकर किया जाएगा। तब समय पर यहाँ से उड़ान शुरू हो जाएगी।
- डॉ. अरुणवीर सिंह, सेक्टर 2 नोएडा इंटेलिजेंट एयरपोर्ट सिमिटेड

देरी हुई तो जुर्माना लगेगा | पूरी तरह से हस्तभर होगा | साइट पर निर्माण

TATA PROJECTS WINS BID FOR CONSTRUCTION OF JEWAR AIRPORT



TATA BEATS L&T AND SHAPOORJI PALLONJI FOR ITS ONLY SECOND AIRPORT PROJECT AFTER ALLAHABAD !



LOCATION MAP

Landmarks in close to **SOLITARRIANN City**

- Standing next to an international Address, i.e. Buddha International Circuit
- Superior connectivity via Yamuna Expressway, Eastern Peripheral Expressway, Noida Gr.\. Noida & Delhi-Noida- Direct (DND) Expressway
- Proposed Metro Station Nearby
- Convenient Access to Jewar Airport
- Close to business and Leisure Destinations
- Day-to-day living amenities and infrastructure like Offices, schools, and healthcare located within 10 minutes
- Strategically located just off the state-of-the-art Yamuna Expressway
- Easy commuting to the major destinations of Delhi
- In-close proximity with ICC Cricket Stadium, Night Safari, Golf course, Top-Notch Universities, i.e. Galgotias University, N.I.U. Gautam Buddh University, Techzone etc
- Convenient access to the commercials centers

OUR COMING UP PROJECTS

RESIDENTIAL PROJECT ON SITAPUR ROAD, LUCKNOW
 RESIDENTIAL PROJECT IN RAJ NAGAR EXTENSION, GHAZIABAD

OUR DELIVERED PROJECTS

25 STOREY GROUP HOUSING PROJECTS AT GREATER NOIDA WEST (J.V.)
 SOLITAIRIAN CITY CENTRE, KNOWLEDGE PARK III, GREATER NOIDA



Register Office :
 D-835, New Friends Colony,
 New Delhi - 110025,
 CIN U70109DL2009PTC194141
 www.solitairian.com

Marketing Office :
 Sector- 25 Jaypee Greens
 Sports City, SDZ Gr. Noida, Dist.
 Gautam Budh Nagar (U.P.) 201308

Disclaimer: The Brochure is purely conceptual and not a legal offering.